

QRPworks

ADIF Utility

Overview

This manual describes how to export QSOs from QRPworks products including the SideKar Extreme, SideKar Plus, SideKar, Key Log Go and Ham Central Terminal in the ADIF format and create a file on the PC or Mac

What's new

In previous versions, the Exchange field in the QRPworks log is always interpreted as RST_RCVD in the ADIF file.

1. In version 1.9 of this Utility,
 - RST Received is now added as an ADIF field. The format of the 10 character **Exchange** field in the QRPworks log is now Rcvd / Sent
 - If a / character is found, the characters to the left of the / is the RECEIVED and the characters after the / is the SENT
 - If no / character is found, the Exchange is RST_RCVD.
 - As shown in the table of examples, the Exchange does not have to be a traditional "599" signal report.

Examples

"Exchange" data in the log	ADIF RST_RCVD	ADIF RST_SENT
579	579	(blank)
579/459	579	459
/589	(blank)	589
001 NY/022 CO	001 NY	022 CO

2. An optional Callsign can be entered which will populate the ADIF field "STATION CALLSIGN".
3. The ADIF field "BAND" is added and is generated automatically from the "FREQ" field.

Exporting QSOs

For The SideKar Plus, SideKar, Key Log,Go and Ham Central Terminal:

1. Connect the KXUSB or equivalent cable from the PC port on the QRPworks device to a USB port on your PC.
2. ***Important: Make sure there is no cable plugged into the Radio port on the QRPworks device***
3. Go to Step 4 below.

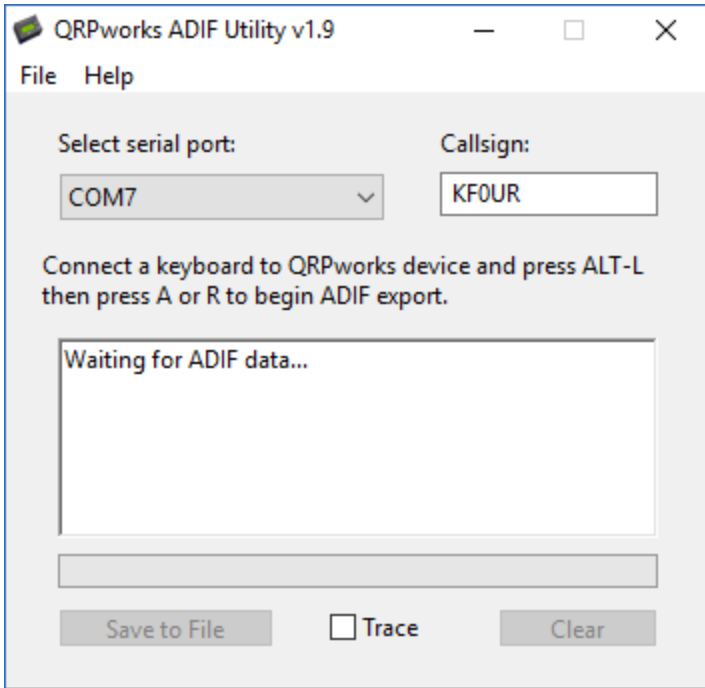
For The SideKar Extreme:

1. Connect a standard USB cable to the micro USB “PC” port on the right side of the SideKar Extreme
2. ***Important: Make sure there is no cable plugged into the “RIG RS-232” port on top.***
3. Go to Step 4 below.

4. Start the QRPworks ADIF Utility on your PC (or Mac).

5. In the QRPworks ADIF Utility, select the COM port to be used. Note that when using the SideKar Extreme, your PC may define a new COM port for this connection.

6. **New in v1.9** (optional) In the QRPworks ADIF Utility, enter the call sign associated with the QSOs being exported in the **Callsign** field. This will be added to the ADIF file in the field STATION_CALLSIGN. If the system receiving the ADIF does not need station call sign (such as LoTW), it can be left blank.

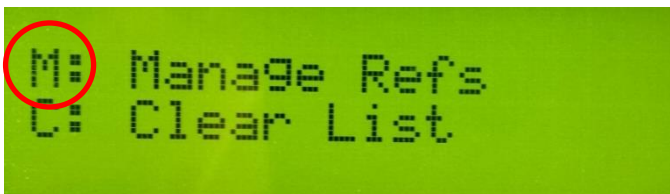


7. On the QRPworks device, press Alt-L to access the Log screen, then press either:
 - **A**, to export all non-deleted QSOs in the log, or
 - **R**, to export only QSOs for the currently active reference (SOTA, IOTA, POTA, etc.).

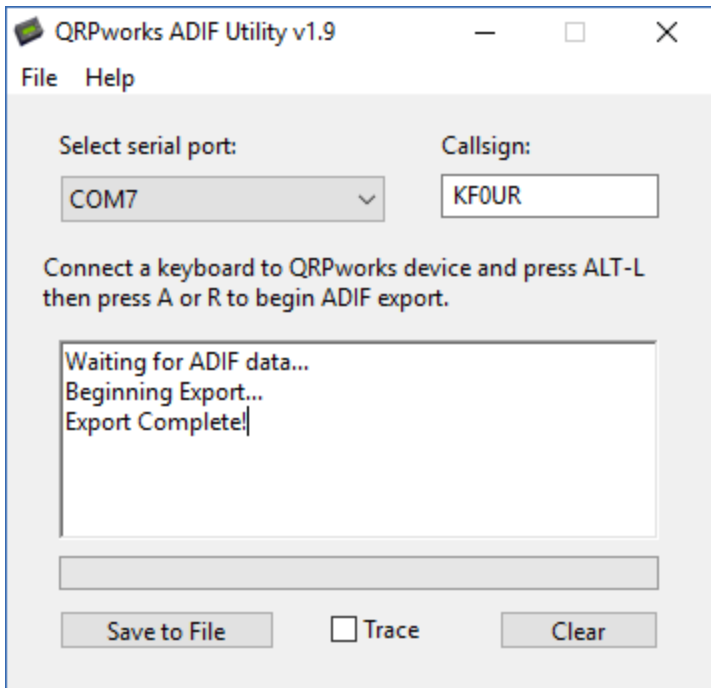


(Ham Central Terminal screen shown)

The currently active reference is seen by pressing **Alt-P** from the normal, receiving mode, then pressing **M**, for Manage Refs. The currently active ref will be indicated by an asterisk (“*”).



8. When the export is complete, you will see the following screen on the QRPworks ADIF Utility:



9. Click **Save to File** to name and save the ADIF file. Browse to the file location of your choice. Typically the extension of the file should be .ADI.
10. The **Trace** checkbox can be checked if you want to see the data being received. This is optional and is typical used only for debugging purposes.

Revision History

Version	Changes
2.0	Fix to ADIF file created if Callsign is left blank
1.9	Call sign, Band, and RST RCVD added as ADIF fields